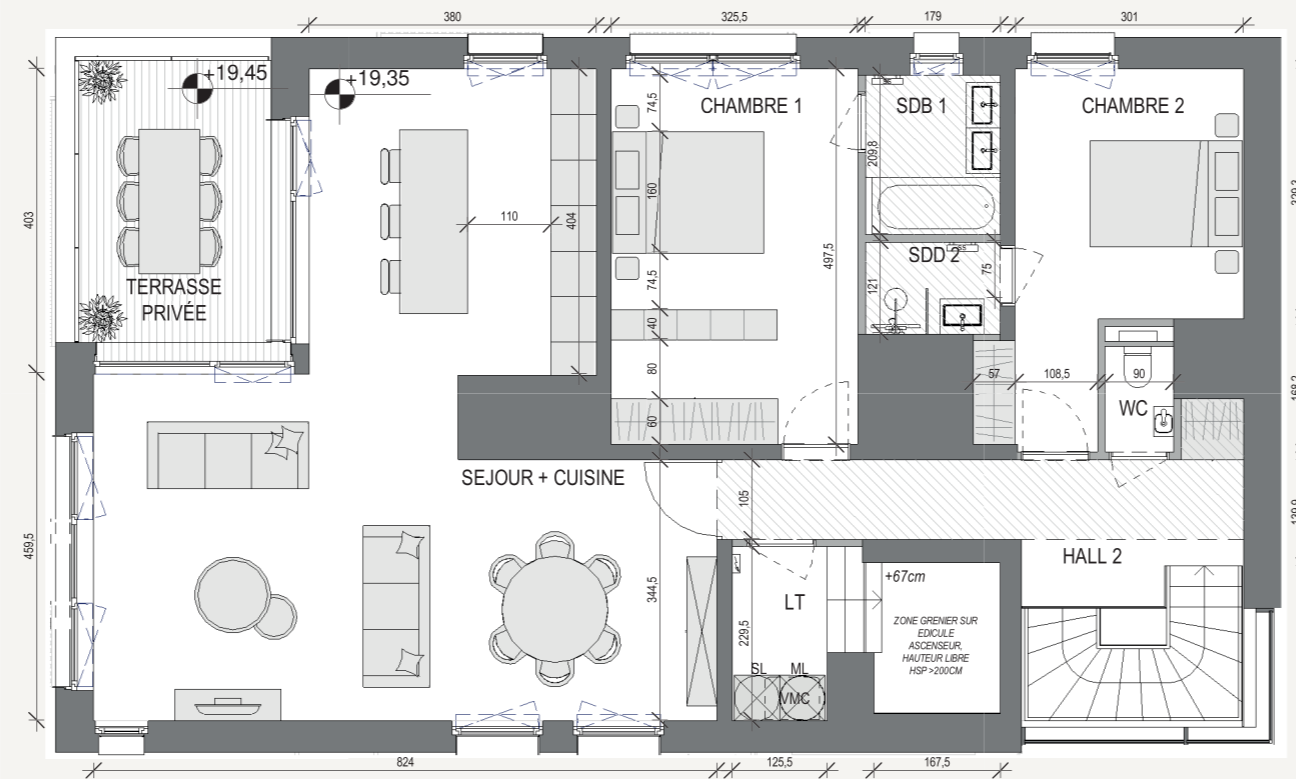
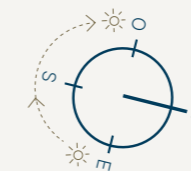


5<sup>ÈME</sup> ÉTAGE



6<sup>ÈME</sup> ÉTAGE



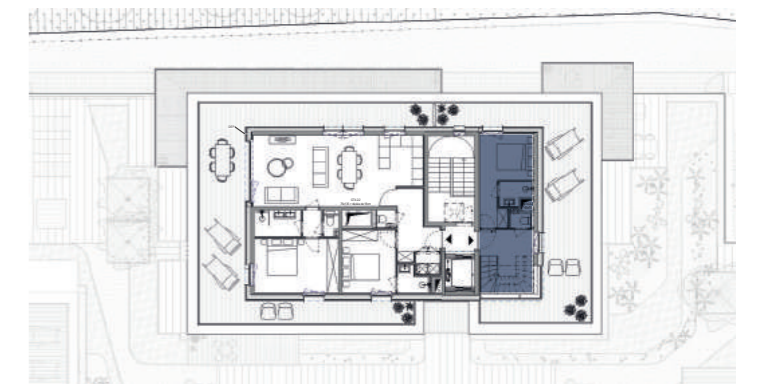
ECHELLE 1/100<sup>ÈME</sup>

**SURFACE VENDABLE** 146,14 M<sup>2</sup>  
**Surface habitable** 127,92 m<sup>2</sup>  
**Surface extérieure** 54,08 m<sup>2</sup>

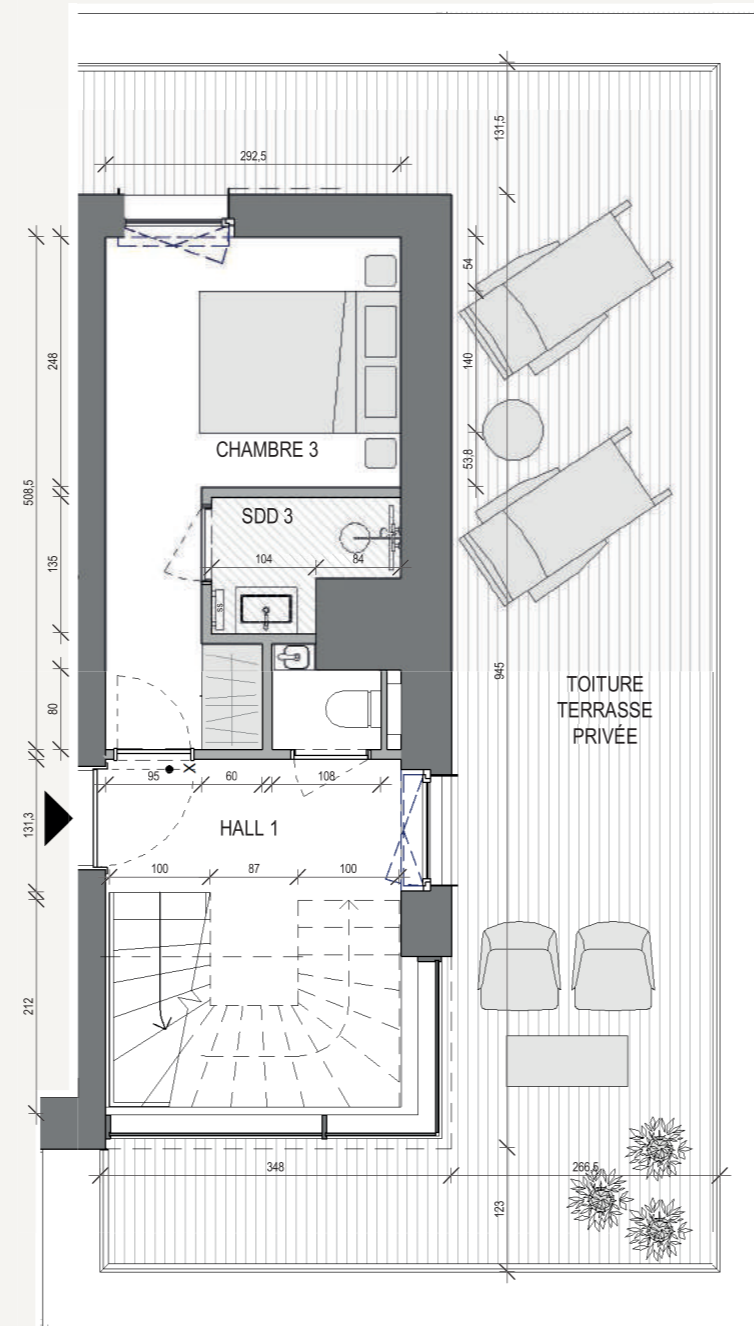
<b>Chambre 1 :</b>	16,19 m <sup>2</sup>	<b>SDB 1 :</b>	3,75 m <sup>2</sup>
<b>Chambre 2 :</b>	12,63 m <sup>2</sup>	<b>SDB 2 :</b>	2,15 m <sup>2</sup>
<b>Chambre 3 :</b>	10,36 m <sup>2</sup>	<b>SDB 3 :</b>	2,07 m <sup>2</sup>
<b>Séjour - cuisine :</b>	49,30 m <sup>2</sup>	<b>Hall 1 :</b>	9,18 m <sup>2</sup>
<b>Terrasse :</b>	54,08 m <sup>2</sup>	<b>Hall 2 :</b>	10,06 m <sup>2</sup>



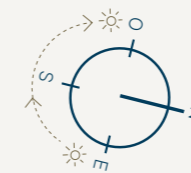
RUE NENNIG



RUE NENNIG



5ÈME ÉTAGE



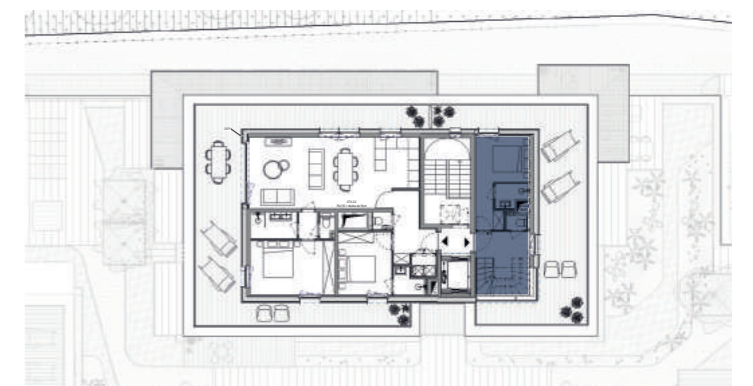
ECHELLE 1/75<sup>ème</sup>

**SURFACE VENDABLE** 146,14 M<sup>2</sup>  
**Surface habitable** 127,92 m<sup>2</sup>  
**Surface extérieure** 54,08 m<sup>2</sup>

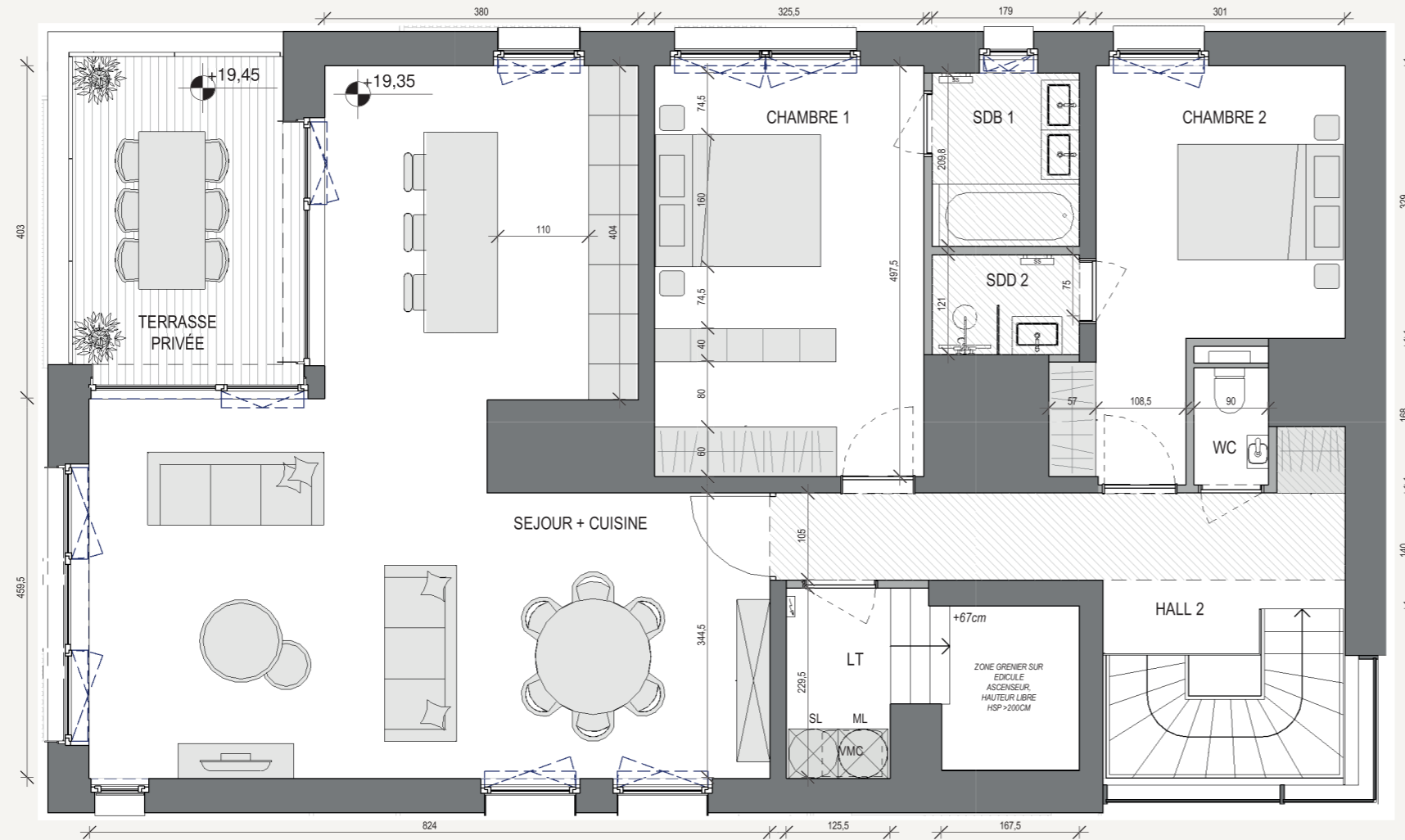
<b>Chambre 3 :</b>	10,36 m <sup>2</sup>	<b>SDB 3 :</b>	2,07 m <sup>2</sup>
<b>Hall 1 :</b>	9,18 m <sup>2</sup>	<b>Terrasse :</b>	44,6 m <sup>2</sup>



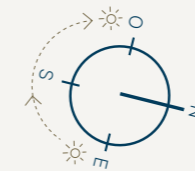
RUE NENNIG



RUE NENNIG



6<sup>ÈME</sup> ÉTAGE



ECHELLE 1/75<sup>ème</sup>

**SURFACE VENDABLE** 146,14 M<sup>2</sup>

Surface habitable 127,92 m<sup>2</sup>

Surface extérieure 54,08 m<sup>2</sup>

Chambre 1: 16,19 m<sup>2</sup>

SDB 1: 3,75 m<sup>2</sup>

Chambre 2: 12,63 m<sup>2</sup>

SDB 2: 2,15 m<sup>2</sup>

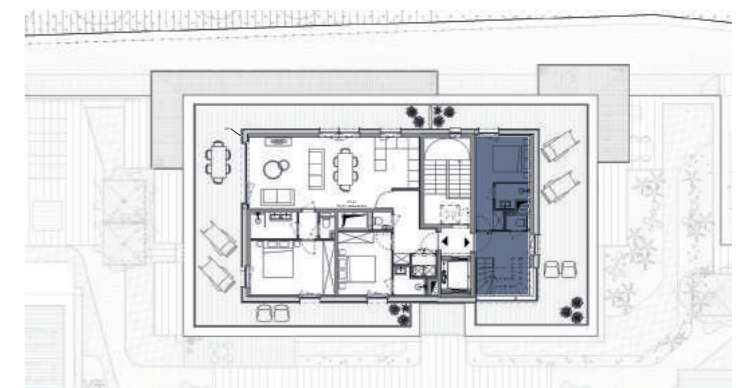
Séjour - cuisine: 49,30 m<sup>2</sup>

Hall 2: 10,06 m<sup>2</sup>

Terrasse: 9,48 m<sup>2</sup>



RUE NENNIG



RUE NENNIG