

SURFACE VENDABLE 95,63 M²

Surface habitable 84,94 m²

Surface extérieure 28,97 m²

Chambre 1: 12,21 m²

SDB 1: 4,75 m²

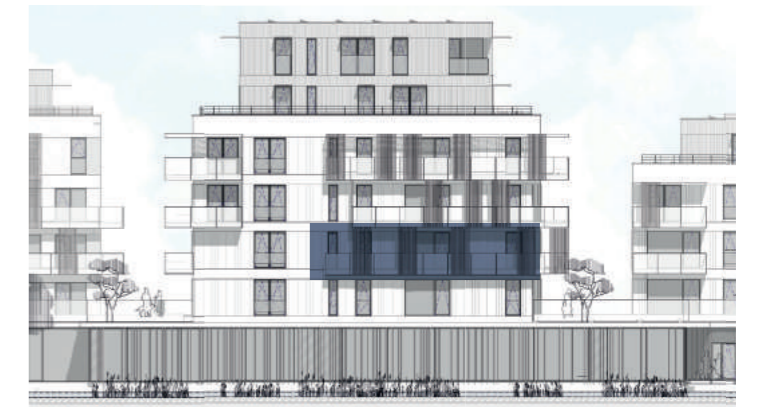
Chambre 2: 10,87 m²

SDB 2: 2,41 m²

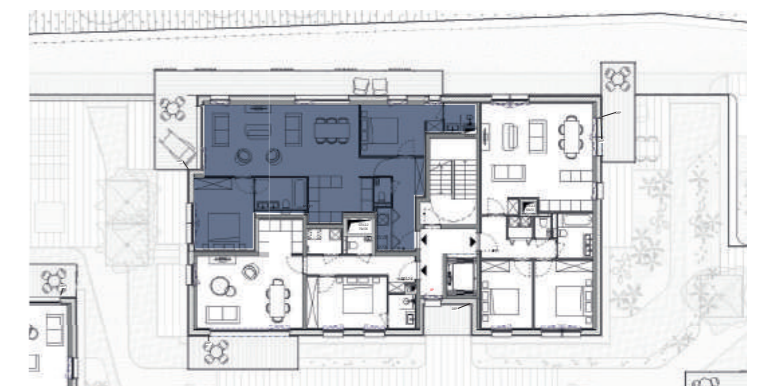
Séjour - cuisine: 41,21 m²

Hall: 7,11 m²

Terrasse: 28,97 m²



FAÇADE ALZETTE



RUE NENNIG

ECHELLE 1/75^{ème}

