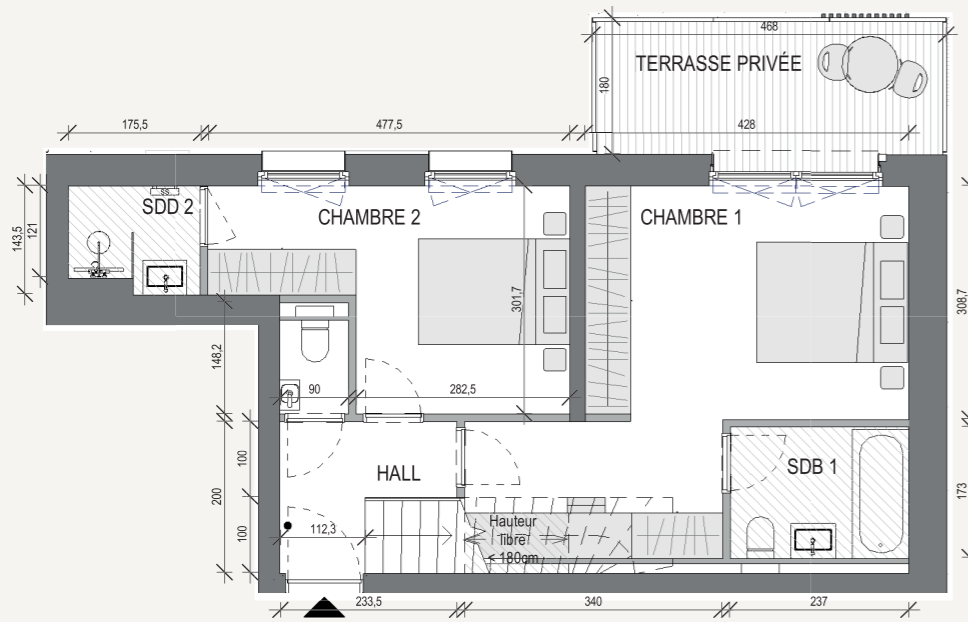
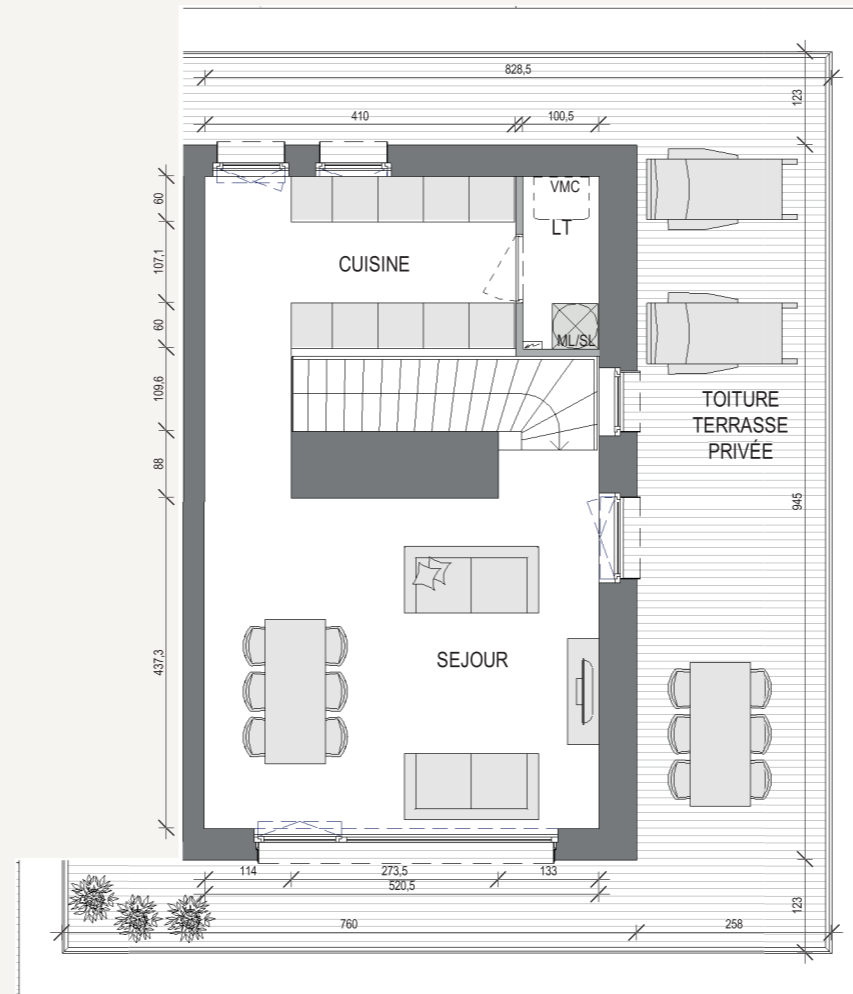


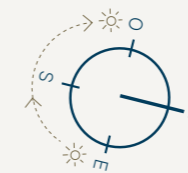
4.1 — 3E ÉTAGE — APPARTEMENT 2 CHAMBRES — 4.1.3.3



3^{ÈME} ÉTAGE



4^{ÈME} ÉTAGE



ECHELLE 1/100^{ème}

SURFACE VENDABLE 104,31M²

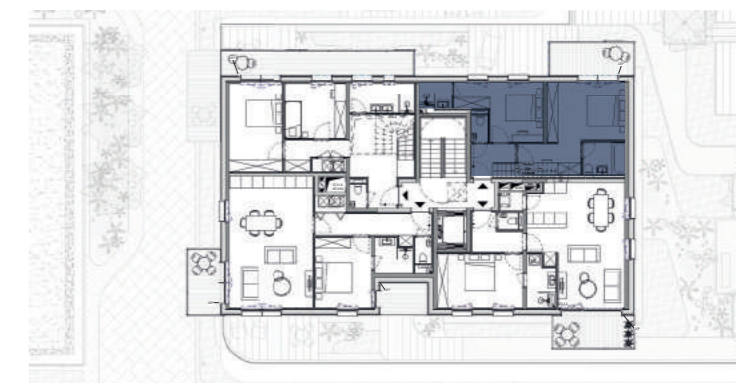
Surface habitable 85,57 m²

Surface extérieure 55,79 m²

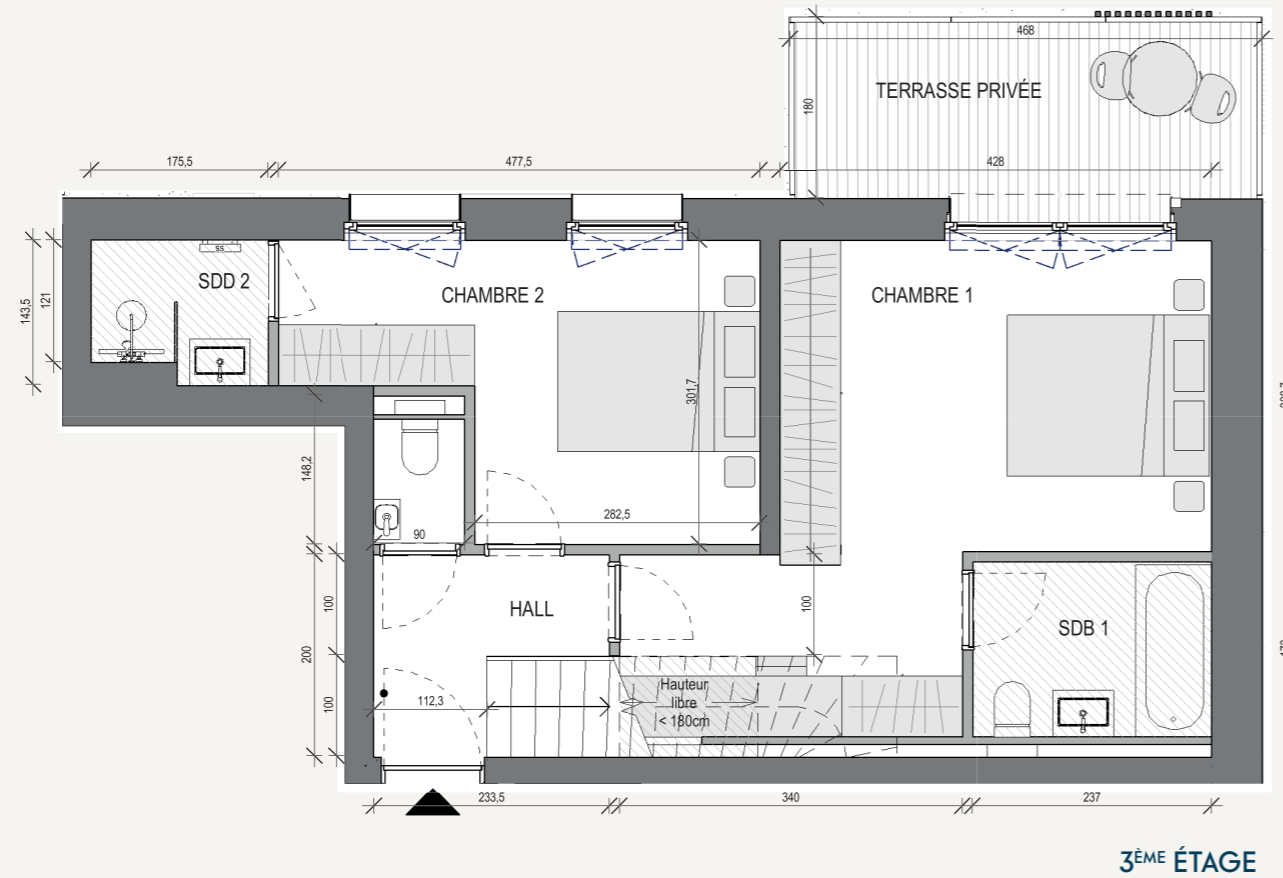
Chambre 1 :	19,01 m ²	SDB 1 :	4,10 m ²
Chambre 2 :	11,89 m ²	SDB 2 :	2,32 m ²
Séjour :	25,56 m ²	Hall :	4,20 m ²
Cuisine :	10,23 m ²	Terrasse :	55,79 m ²



FAÇADE ALZETTE



RUE NENNIG



SURFACE VENDABLE 104,31 M²

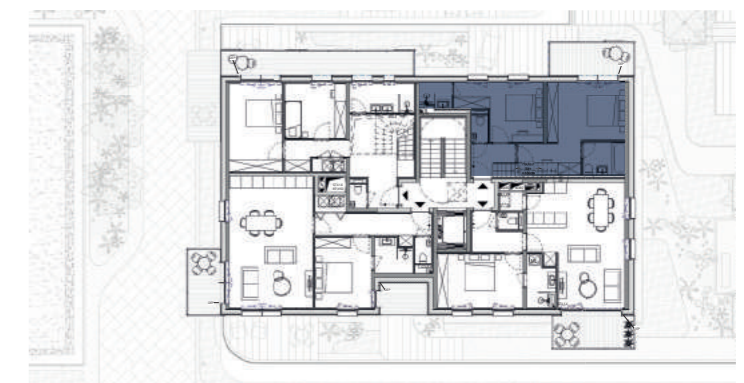
Surface habitable 85,57 m²

Surface extérieure 55,79 m²

Chambre 1 :	19,01 m ²	SDB 1 :	4,10 m ²
Chambre 2 :	11,89 m ²	SDB 2 :	2,32 m ²
Terrasse :	8,22 m ²	Hall :	4,20 m ²

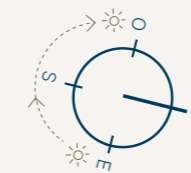


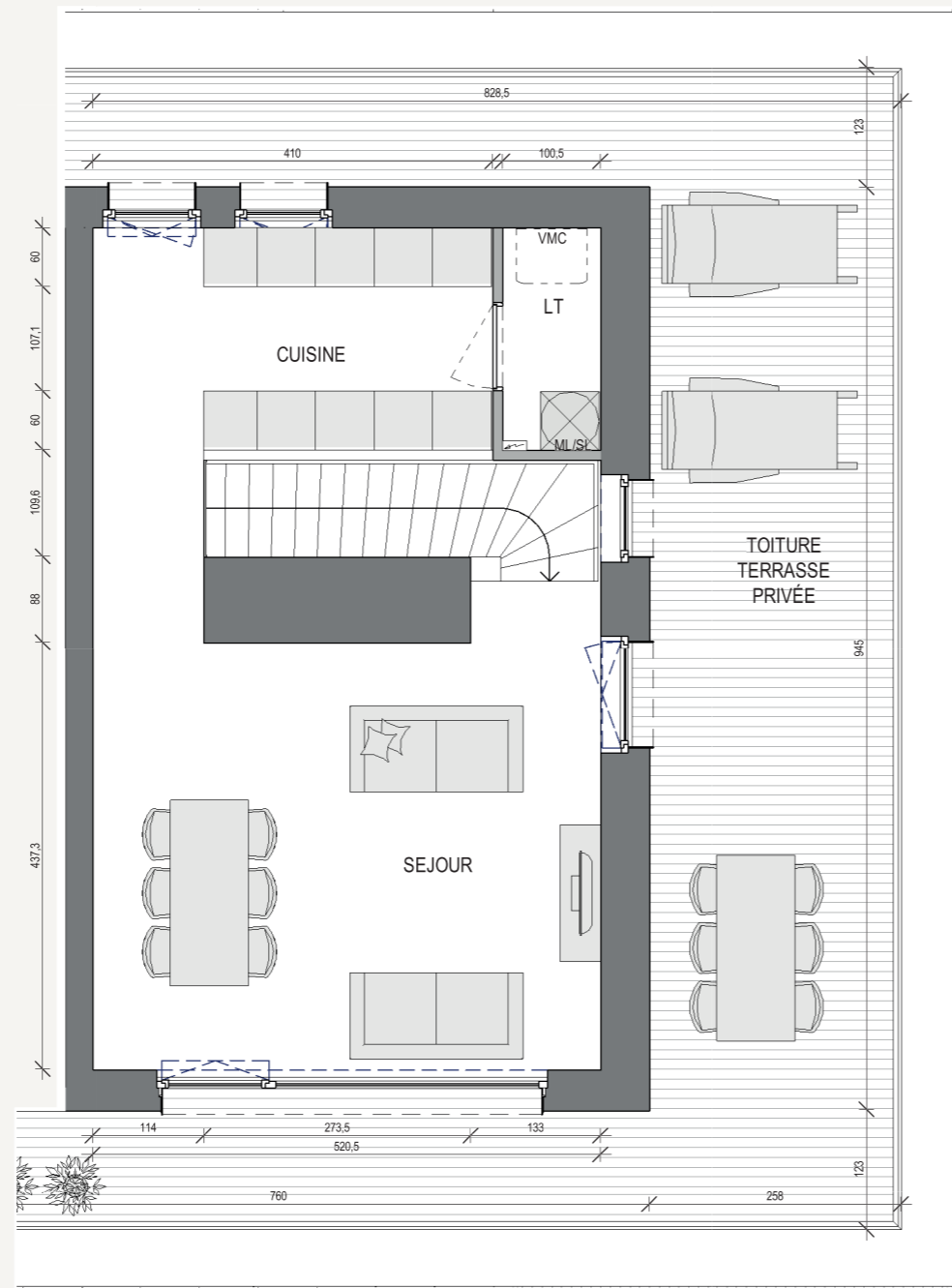
FAÇADE ALZETTE



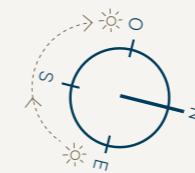
RUE NENNIG

ECHELLE 1/75^{ème}





4^{ÈME} ÉTAGE



ECHELLE 1/75^{ème}

SURFACE VENDABLE 104,31 M²

Surface habitable 85,57 m²

Surface extérieure 55,79 m²

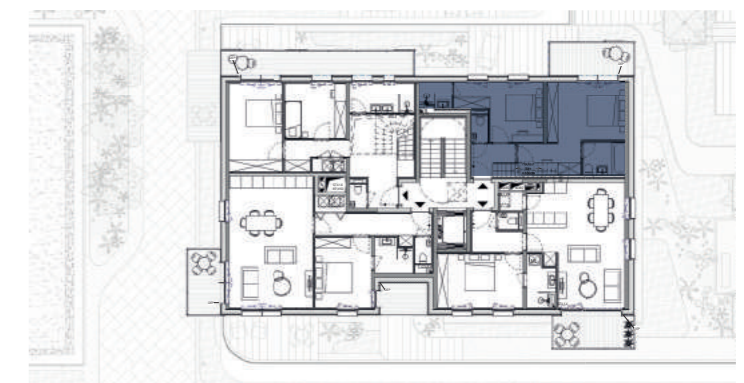
Cuisine : 10,23 m²

Séjour : 25,56 m²

Terrasse : 47,57 m²



FAÇADE ALZETTE



RUE NENNIG